

# CLADSUN<sup>TM</sup>

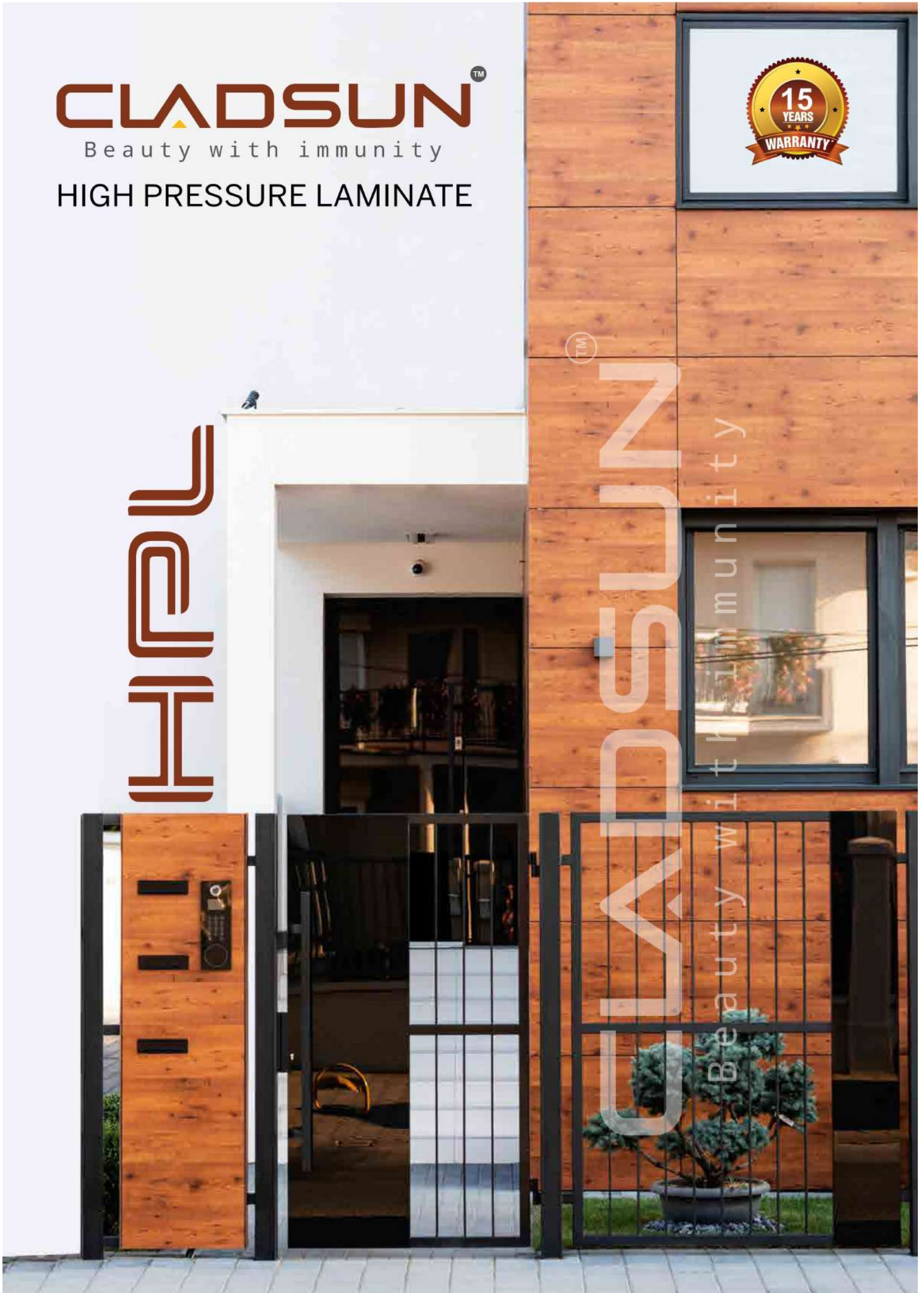
Beauty with immunity

HIGH PRESSURE LAMINATE



HIPOL

CLADSUN<sup>TM</sup>  
Beauty with immunity





**EXTERIOR HPL**

---

**FEEL THE  
REALISTIC  
FROM THE**  
*Nature!*

**CLADSUN<sup>TM</sup>**  
Beauty with immunity

**HIGH PRESSURE LAMINATE**

**CLADSUN**<sup>™</sup>  
Beauty with immunity

**TIMELESS  
BEAUTY AND  
EXPERIENCE OF**  
*Art Together*

## *Our Story*

Cladsun is highly durable high pressure laminate (HPL) with a decorative Surface that is suitable for exteriors. It is fade resistant, weather proof, termite proof and complies with standard EN-438-6.

It is entirely made up of layer of phenolic resin & impregnated craft papers with top imported decorative layer and UV protective film.

The manufacturing process involves the combining of paper with applications of high heat (150°C) and high pressure (9 Mpa) in which resin polycondensation takes place. One or both sides can be decorative mixed with the phenolic resins.



## CHARACTERISTICS

- Resistance to UV rays
- Resistance to atmospheric conditions
- Resistance to swelling in boiling water
- Fire-resistance
- Physical resistance to strikes and abrasion
- Chemical resistance to mild acids, rain, air pollution
- Wide range of colors and patterns
- Easy to care and repair
- Do not contain any harmful substances



- Maximum light fasten
- Overall lightweight substructure and facade
- dimensional stability and flatness
- Light weight facade system
- Easier perforation

## CLEANING & MAINTENANCE

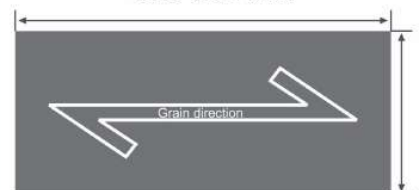
The protective film applied at factory must be removed from the surface of the panel immediately after installation to the facade. The surface of Cladsun panels repels dust, however over the time it may be necessary to clean their surface with soapy water for better aesthetic over time.

## WARRANTIES

Thanks to practical experience over many year and the high quality of Cladsun HPL Panels, warranties are available both for the product range in general and for specific projects. More information can be obtained from your local representative.

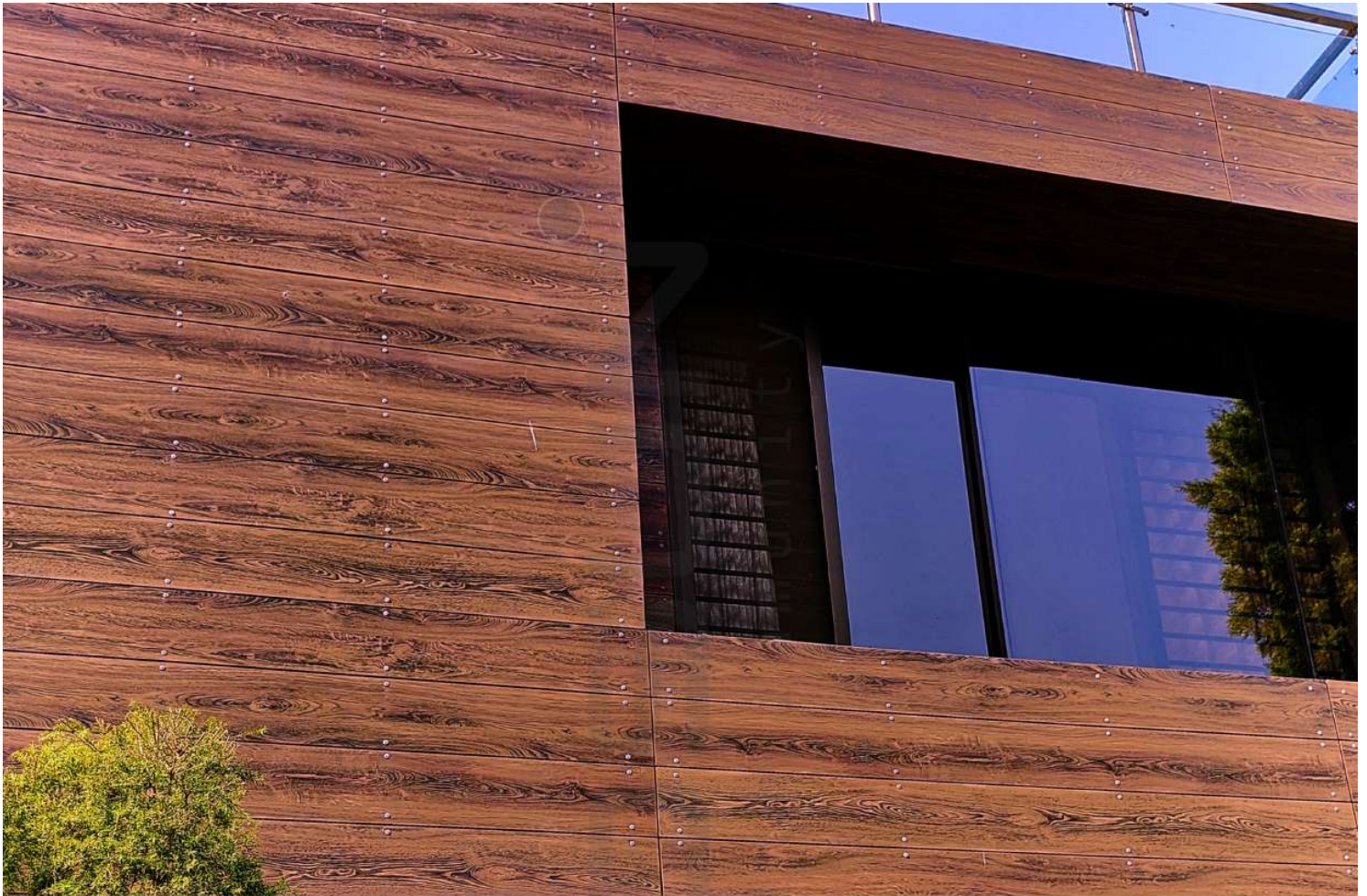
## REGULAR SIZES

2440\*1220\*6mm



Thickness

On demand: 3 to 40mm



## HANDLING & STORAGES

Cladsun panel comes with a film on top layer for protection during transportation. During stocking, panels must be stacked horizontally on flat, stable shelves, the panels to be stored in closed rooms under dry, normal climatic conditions. Cover plates must always be left on the stack. The cover should be weighted down. Any form of dirt or dust between the panels must definitely be avoided. Panels must be lifted and not pushed or pulled over the edge when carrying or loading.

For climate differences, keep panels waiting for 24 hours in new climate conditions. With pre-installed fastening elements, care is to be taken that the climatic effect is uniform on all sides. Use intermediate layers of wood or plastic.



**CLS-620**



**CLS-8010**



**CLS-815**



**CLS-818**



**CLS-821**



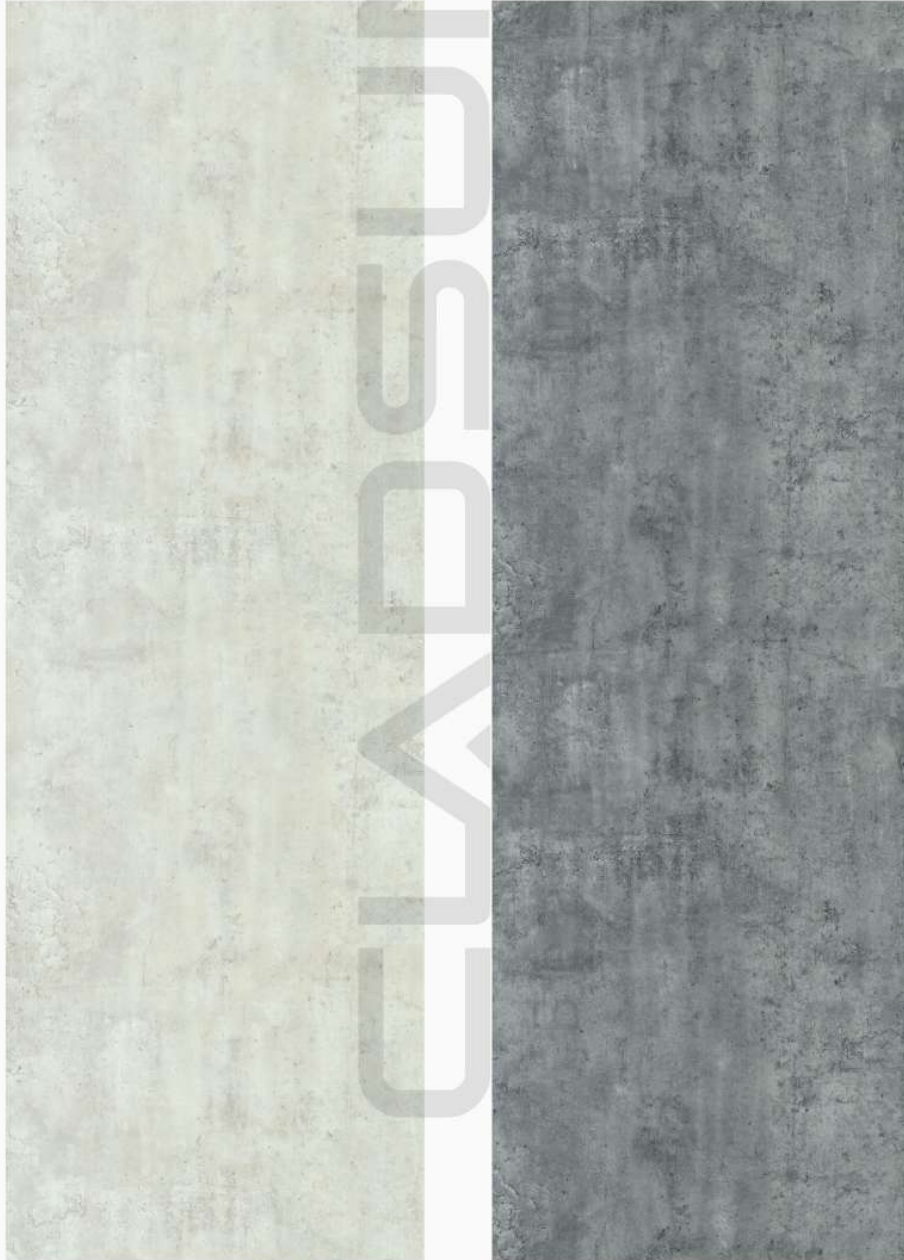
**CLS-823**



**CLS-5399**



**CLS-5784**



**CLS-5394**

**CLS-5795**



**CLS-5795**



**CLS-5798**



**CLS-5801**



**CLS-5809**



**CLS-5812**



**CLS-5814**



**CLS-5825**

**CLS-9601**



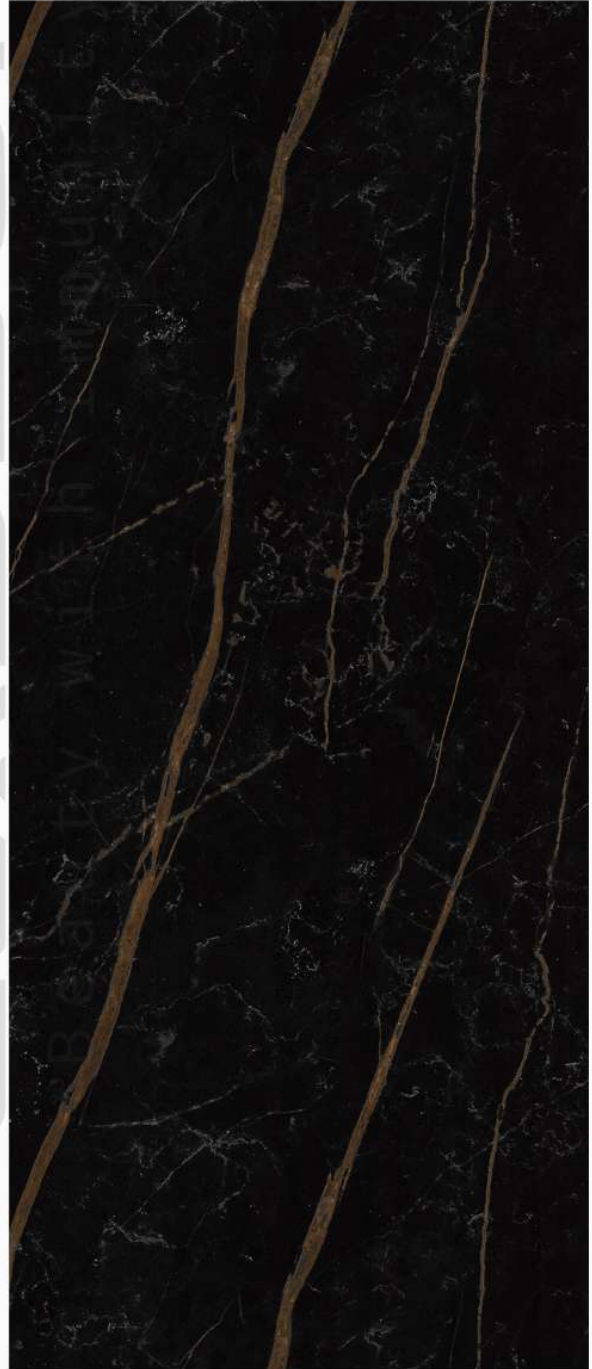
**CLS-9606**



**CLS-9608**



**CLS-9609**



**CLS-9616**



**CLS-1000**  
Green Beige



**CLS-1006**  
Luminous Orange



**CLS-1012**  
Claret Violet



**CLS-1001**  
Beige



**CLS-1007**  
Luminous Burnt Orange



**CLS-1013**  
Blue Lilac



**CLS-1002**  
Sand Yellow



**CLS-1008**  
Bright Red Orange



**CLS-1014**  
Traffic Purple



**CLS-1003**  
Single Yellow



**CLS-1009**  
Traffic Orange



**CLS-1015**  
Purple Violet



**CLS-1004**  
Golden Yellow



**CLS-1010**  
Single Orange



**CLS-1016**  
Signal Violet



**CLS-1005**  
Honey Yellow



**CLS-1011**  
Deep Orange



**CLS-1017**  
Pastel Violet



**CLS-1018**  
Emerald Green



**CLS-1024**  
Single Grey



**CLS-1030**  
Green Brown



**CLS-1019**  
Leaf Green



**CLS-1025**  
Mouse Grey



**CLS-1031**  
Ochre Brown



**CLS-1020**  
Olive Green



**CLS-1026**  
Beige Grey



**CLS-1032**  
Single Brown



**CLS-1021**  
Blue Green



**CLS-1027**  
Khaki Grey



**CLS-1033**  
Clay Brown



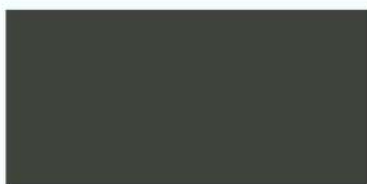
**CLS-1022**  
Moss Green



**CLS-1028**  
Green Grey



**CLS-1034**  
Copper Brown



**CLS-1023**  
Grey Olive



**CLS-1029**  
Tarpaulin Grey



**CLS-1035**  
Fawn Brown



**CLS-1036**  
Violet Blue



**CLS-1042**  
Brilliant Blue



**CLS-1048**  
Light Blue



**CLS-1037**  
Green Blue



**CLS-1043**  
Grey Blue



**CLS-1049**  
Cobolt Blue



**CLS-1038**  
Ultramarine Blue



**CLS-1044**  
Night Blue



**CLS-1050**  
Pigeon Blue



**CLS-1039**  
Sapphire Blue



**CLS-1045**  
Azure Blue



**CLS-1051**  
Sky Blue



**CLS-1040**  
Black Blue



**CLS-1046**  
Gentian Blue



**CLS-1052**  
Turquoise Blue



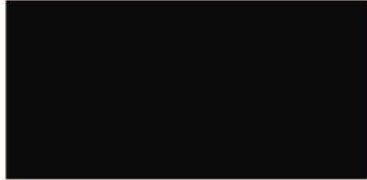
**CLS-1041**  
Signal Blue



**CLS-1047**  
Steel Blue



**CLS-1053**  
Ocean Blue



**CLS-1036**  
Signal Black



**CLS-1042**  
Traffic White



**CLS-1048**  
Ruby Red



**CLS-1037**  
Jet Black



**CLS-1043**  
Traffic Black



**CLS-1049**  
Purple Red



**CLS-1038**  
White Aluminum



**CLS-1044**  
Papyrus



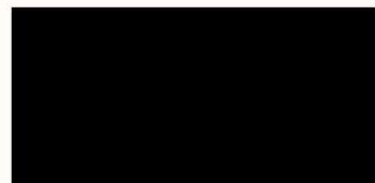
**CLS-1050**  
Wine Red



**CLS-1039**  
Grey Aluminum



**CLS-1045**  
Flame Red



**CLS-1051**  
Black Red



**CLS-1040**  
Pure White



**CLS-1046**  
Signal Red



**CLS-1052**  
Oxide Red



**CLS-1041**  
Graphite Black



**CLS-1047**  
Carmine Red



**CLS-1053**  
Brown Red

# TECHNICAL SPECIFICATION

No.	PROPERTIES	TEST METHOD	ATTRIBUTES OF PERFORMANCE	UNIT OF MEASUREMENT	RESULTS (AS PER EN-438-6)
			<b>EN-438 Laminate Classification</b>		<b>EGS/EDS/EGF/EDF</b>
<b>1</b>	<b>SURFACE QUALITY</b>				
	Surface Quality	EN 438-2.4	Spot dirt and similar surface defects	mm <sup>2</sup> /m <sup>2</sup>	2
			Fibre, Hair and Scratches	mm <sup>2</sup> /m <sup>2</sup>	20
<b>2</b>	<b>DIMENSIONAL PROPERTIES</b>				
2.1	Thickness	EN 438-2.5	Thickness Tolerance	mm	2 <T< 3:+0,2
				mm	3<T< 5:+0,3
				mm	5 <T< 8:+0,4
				mm	8 <T< 12:+0,4
				mm	12 <T< 12:+0,4
				mm	16<T< 12:+0,4
				mm	20<T< 20:+0,4
				mm	25 <T< :+0,4
2.2	Size	EN 438-2.6	Length and Width	mm	±10,0
2.3	Straightness of Edges	EN 438-2.7	Straightness of Edges	mm/m	≤1,5
2.4	Squareness	EN 438-2.8	Squareness	mm/m	≤1,5
2.5	Squareness	EN 438-2.9	Squareness	mm/m	2,0 <T< 6,0:8
				mm/m	6,0 <T< 10,0:5
				mm/m	10,0 <T:3
<b>3</b>	<b>PHYSICAL PROPERTIES</b>				
3.1	Flexural Modulus	EN ISO 178	Stress	mpa	> 9000
3.2	Flexural Strength	EN ISO 178	Stress	mpa	> 80
3.3	Tensile Strength	EN ISO 527-2	Stress	mpa	> 60
3.4	Density	EN ISO 1183	Density	gm/cm <sup>3</sup>	> 1,35
3.5	Resistance to Impact with Large Diameter Ball	EN 438-2.21	Indent Dia. 10 mm T 6 mm-Drop Height	min	≥ 1400
			Indent Dia. 10 mm T 6 mm-Drop Height	min	≥ 1800
3.6	Resistance to Wet Conditions	EN 438-2.15	Mass Increase - 2 T 5 mm	Max%	EGS/EDS- < 7
					EGS/EDS - < 10
			Mass Increase - < 5 mm	Max%	EGS/EDS - < 5
					EGS/EDS - < 8
	Appearance		Rating	≥ 4	
3.7	Dimensional Stability at Elevated Temperatures	EN 438-2.17	Cumulative Dimensional Change - 2 <T< 5 mm		
			Cumulative Dimensional Change - T> 5 mm		
<b>4</b>	<b>WEATHER RESISTANCE REQUIREMENTS</b>				
4.1	Resistance to Climatic Shock	EN 438-2.19	Thermal Shock Resistance – Appearance	Rating	≥ 4
4.2	Resistance to Artificial Weathering	EN 438-2.29	Contrast	Grey Scale Rating	≥ 3
			Appearance	Rating	≥ 4
<b>5</b>	<b>FIRE PERFORMANCE</b>				
5.1	Fire Reaction Classification (on demand)	EN 135 01	Test as per EN 13823 (SBI Test) and EN ISO 11925-2 (Small-Burner Test)		
			Classification - 3 <T< 6 mm	Classification	B -s2, d0
			Classification - 6 <T< 13 mm	Classification	D -s1, d0